

Business Planning and Transport Policy and Scrutiny Committee

Date:	15 November 2017
Classification:	General Release
Title:	Update on progress of the Safer Westminster Partnership
Report of:	Sara Sutton: Director of Public Protection & Licensing
Cabinet Member Portfolio	Public Protection – Cabinet Member for City Highways
Wards Involved:	All
Policy Context:	Community Safety
Report Author and Contact Details:	Report Author Angela Lambillion x5753 alambillion@westminster.gov.uk Angela Lambillion- Community Safety Commissioning Manager

1 Executive Summary

- 1.1 This report provides an update for the Committee on the following items:
- Progress on delivery of the Safer Westminster Partnership strategy
 - The key findings of the Safer Westminster Partnership ('SWP') Strategic Assessment.

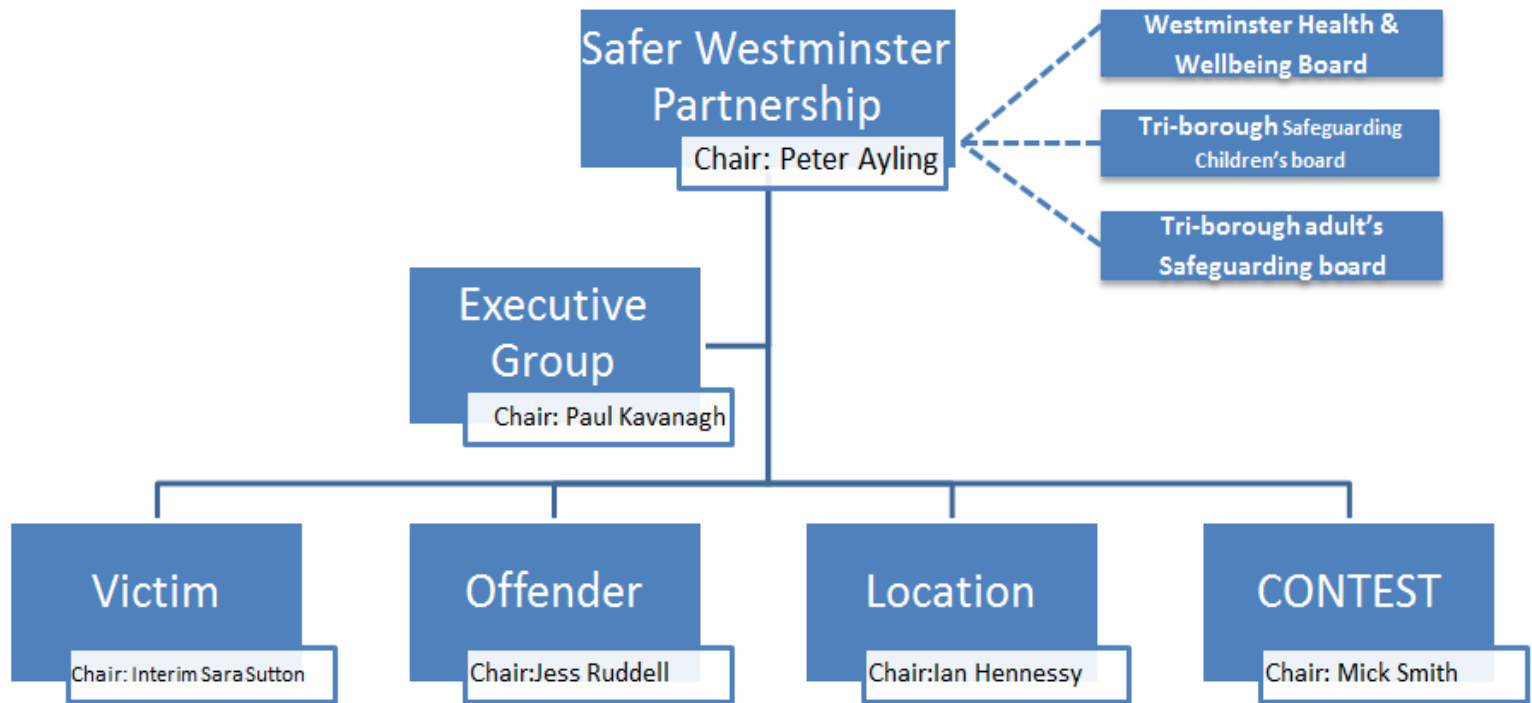
2 Key matters for the Committee's Consideration

- 2.1 The Committee are asked to note the contents of this report and provide any feedback.

3 Safer Westminster Partnership Strategy

- 3.1 The three year strategy was produced in June 2017 and sets out the vision 'Making Westminster safer by working in partnership to reduce the risk and harm of crime and Anti-Social Behaviour ('ASB'), and focusing on protecting the most vulnerable within our communities'.

3.2 The structure of the SWP was refreshed this year to make it more problem oriented and to provide flexibility to respond to new and emerging issues. Underpinning this strategy are action plans for the four main delivery groups, Victim, Offender, Location and CONTEST, which relates to the counter terrorism strategy. These action plans will be refreshed annually as a result of the findings of the annual Safer Westminster Partnership strategic assessment. The latest strategic assessment and Safer Westminster Strategy are attached to this report for information.



3.3 Each of the boards has met three times. The first to agree the action plans and then to review and assess progress made. The next section lists some of the progress made to date. Of note, progress has been hindered by the partnership response to the recent terrorist attacks and the tragic Grenfell Tower fire.

3.4 Victim progress

3.4.1 The overarching aim of the group is; identifying and working with repeat victims to reduce their vulnerability.

3.4.2 A registered social landlord practitioner's forum has been set up and had its inaugural meeting on 12th October. The purpose of the meeting is to share Anti-Social Behaviour (ASB) knowledge and best practice to ensure victims are provided a consistent quality of service.

3.4.3 Domestic violence has some of the highest levels of repeat victimisation and services are commissioned through the Angelou partnership to address this along with Standing Together to work with high risk victims of domestic abuse. 92% of women who worked with Angelou reported increased physical and or psychological safety and feelings of safety as measured by exit surveys/closing assessments.

3.4.4 A young women's advocate to support young women affected by gangs and youth violence is currently funded through MOPAC (Mayor's Office for Policing & Crime). This role has enabled the issue of girls affected by gangs to be discussed more frequently.

3.4.5 A pilot is to commence in November using Anti-Social Behaviour warning notices to help identify young people on the periphery of serious youth violence or gang activity as victims or offenders. This will be piloted in Little Venice/Church Street and Tachbrook wards.

3.5 Offender progress

3.5.1 The overarching aim of the Offender Delivery group; working with the most problematic offenders to reduce their re-offending.

3.5.2 Starting Over through Turning Point has been commissioned to provide additional support to the most prolific offenders in the borough from the Integrated Offender Management cohort. 33 people have been referred to Starting Over this financial year. 8 people have completed their treatment and 5 are now shown as drug free.

3.5.3 A wider evidence base has been collated on the indicators that put someone at risk of offending such as poor attendance and being in care of a child in need. Children's Services are using this evidence to ensure scarce resources are not duplicated to limit the number of professionals working with young people and to simplify processes. This will now be expanded to cover adult offender cohorts.

3.6 Location progress

- 3.6.1 The overall objective of the Locations delivery group is to: Reduce high harm crime in Queens Park, Church Street wards and the West End.
- 3.6.2 One of the key outcomes of the Locations Delivery group is to improve employment opportunities within the vulnerable Queens Park and Church Street wards. This group has benefited from forging new links across the partnership in particular with the Economic team. Work is on-going to link up young people with hospitality job opportunities that exist.
- 3.6.3 ASB protocols have been developed and training is being delivered across the partnership. An ASB officer within City West Homes is intervening early in low level threshold ASB, through family support and joint visits to identify what parental support is available.
- 3.6.4 The Street Population Action Group meet monthly to ensure ASB associated with street population at hotspots is effectively tackled through co-ordinated joined up engagement and enforcement by partnership agencies. 100 people are being monitored across four areas. To date this has resulted in 7 Community Protection Notices being issued for begging.
- 3.6.5 An ASB officer within City West Homes is intervening early in low level threshold ASB, through family support and joint visits to identify what parental support is available. He is now attending ward panels to ensure appropriate referrals are made.

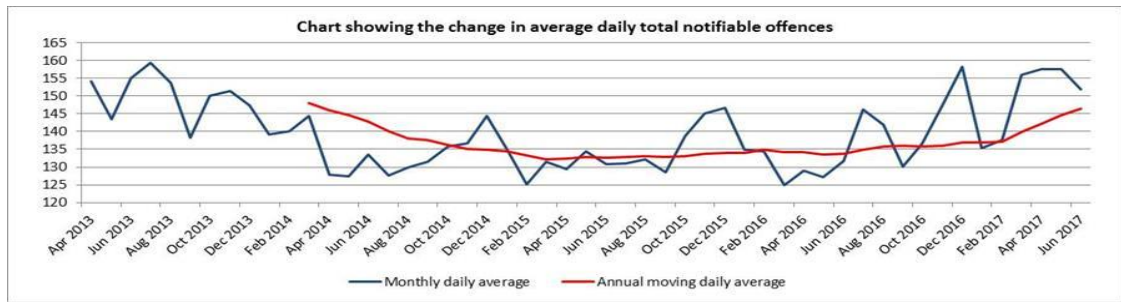
3.7 CONTEST progress

- 3.7.1 Project Griffin training is delivered to increase awareness of how best to reduce and respond to the most likely types of terrorist attacks. 123 presentations have been given to 3,892 people since April 2017. More detailed training is delivered via Project Argus, 14 sessions have been delivered over the first two quarters of this year.
- 3.7.2 The threat level has been raised to critical on two occasions since the start of this performance year. As a result, a review of deployments and activity in the local Protect plan has been undertaken.
- 3.7.3 As part of the Prevent Programme, project planning is underway to commission a range of projects in order to support and empower Westminster's communities including;
 - >Deliver strengthening families
 - >Strengthening communities
 - >Parenting programme
 - >Deliver fathers for future.

4 Safer Westminster Partnership Strategic Assessment

- 4.1 A strategic assessment is produced annually as a requirement of the Police and Justice Act 2006 on behalf of the responsible authorities for the Safer Westminster Partnership. The aim is to identify the key crime and anti-social behaviour issues affecting the borough and to make recommendations on SWP priorities for 2018/19. The latest report is attached for information.
- 4.2 New and emerging findings from the Strategic Assessment
 - 4.2.1 Over the last year crime has increased by 9%, the highest annual rise in crime for over a decade. Whilst some of this increase can be attributed to improvements in crime

recording not all can. Despite this increase, public confidence and feelings of safety remain high.



- 4.2.2 In contrast, the volume of resident offenders being dealt with by the criminal justice system has declined dramatically. Over the last decade the number of resident adult offenders in Westminster has nearly halved and there are seven times fewer juveniles. In spite of this reduction, the proportion of juvenile offenders who reoffend has increased and a small proportion of offenders are responsible for a considerable volume of crime. This highlights the importance of concentrating resources on this small recidivist cohort.
- 4.2.3 It is unclear if this increase in crime is a result of an increase in cross border offenders or foreign national offenders coming into the borough to commit crime. New trends are emerging in relation to offending and victimisation particularly among young people with an increase in crime being committed across 'county lines'. A greater understanding of this issue is needed to fully understand the extent and risks to facilitate the prompt sharing of intelligence and information.
- 4.2.4 Reducing repeat victimisation should be at the heart of any action taken to work with victims as previous victimisation is the single best predictor of future victimisation. The levels of repeat domestic violence victimisation remain high at 18% and increases to 22% for most high risk cases.
- 4.2.5 Westminster has a distinct temporal pattern of incidents compared to the rest of London. The West End alone has a bigger night time economy than that of Edinburgh, Birmingham and Manchester combined. Nearly one third of incidents occurred between 00:00 to 05:59 hours compared with only 19% across London. This disparity may increase further with the Mayor's ambition for a 24 hour city of culture and entertainment.
- 4.2.6 Hate crime levels have increased and been shown to peak following a terrorism incident. Further analysis is needed to understand this link and any impact this may have on community tension. A lack of access to police data is currently inhibiting this.

5 Next steps

- 5.1 The Strategic Assessment findings will be presented to the Safer Westminster Partnership meeting on 26th October 2017 and recommendations will be made upon refreshing the partnership plan and respective action plans.

**If you have any queries about this Report or wish to inspect any of the Background Papers please contact Report Author x5753
alambillion@westminster.gov.uk**